

2010 / 18

COMPREHENSIVE PLAN FUTURE LAND USE MAP AMENDMENT FOR THE MAY RIVER COMMUNITY PRESERVATION DISTRICT FROM RURAL TO RURAL COMMUNITY PRESERVATION AREA.

BE IT ORDAINED, that County Council of Beaufort County, South Carolina, hereby amends the Comprehensive Plan Future Land Use Map of Beaufort County, South Carolina. The map is attached hereto and incorporated herein.

Adopted this 27th day of September, 2010.

COUNTY COUNCIL OF BEAUFORT COUNTY


By: 

Wm. Weston J. Newton, Chairman

APPROVED AS TO FORM:


Ladson F. Howell, Staff Attorney

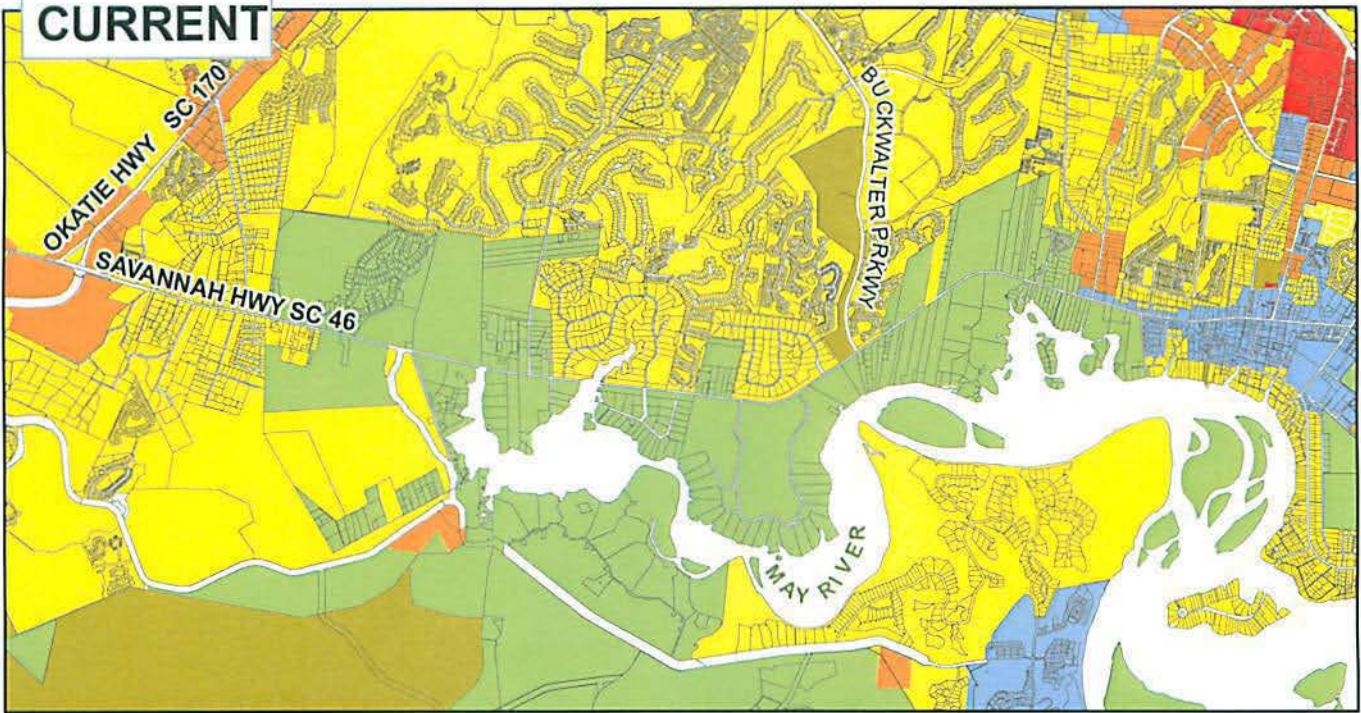
ATTEST:


Suzanne M. Rainey, Clerk to Council

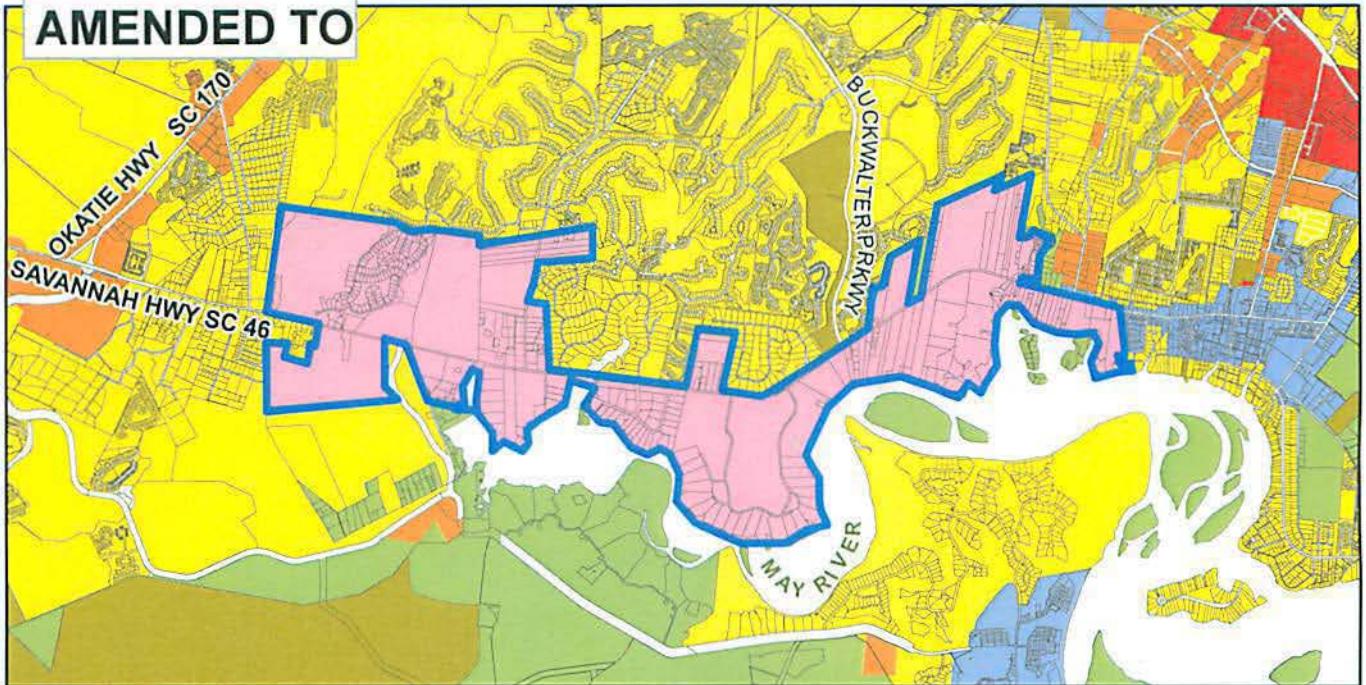
First Reading: August 23, 2010
Second Reading: September 13, 2010
Public Hearing: September 27, 2010
Third and Final Reading: September 27, 2010

(Amending 99/12)

CURRENT



AMENDED TO



LEGEND

- Parcels
- Preserved Land
- Rural
- Rural Community Preservation
- Neighborhood / Mixed Use
- Community Commercial
- Regional Commercial
- Core Commercial
- MAY RIVER Community Preservation District, Proposed

**May River Community Preservation
Future Land Use Map Amendment**

From Rural to Rural Community Preservation

