

2010 / 20

BEAUFORT COUNTY ZONING MAP AMENDMENT FOR THE MAY RIVER COMMUNITY PRESERVATION DISTRICT FROM RURAL, RURAL-RESIDENTIAL, AND RURAL-TRANSITIONAL OVERLAY DISTRICTS TO MAY RIVER COMMUNITY PRESERVATION DISTRICT.

BE IT ORDAINED, that County Council of Beaufort County, South Carolina, hereby amends the Comprehensive Plan Future Land Use Map of Beaufort County, South Carolina. The map is attached hereto and incorporated herein.

Adopted this 27th day of September, 2010.

COUNTY COUNCIL OF BEAUFORT COUNTY


By: 

Wm. Weston J. Newton, Chairman

APPROVED AS TO FORM:

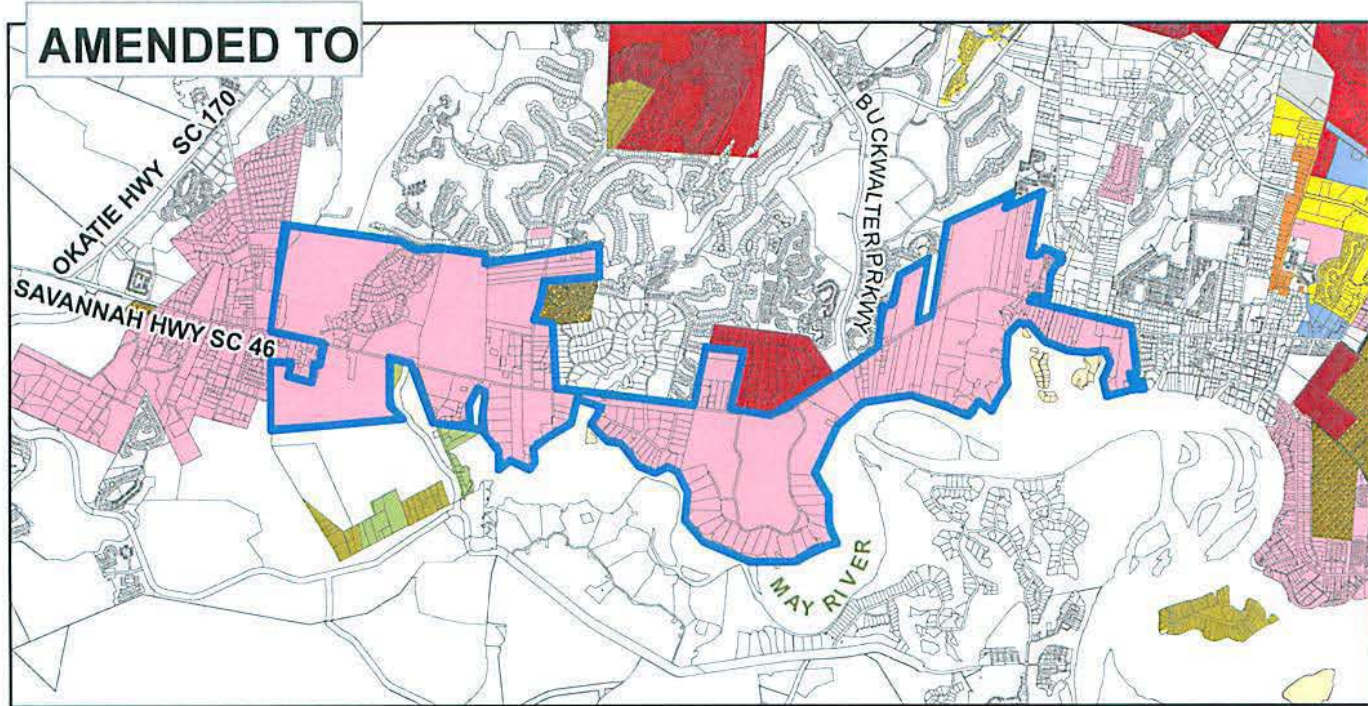
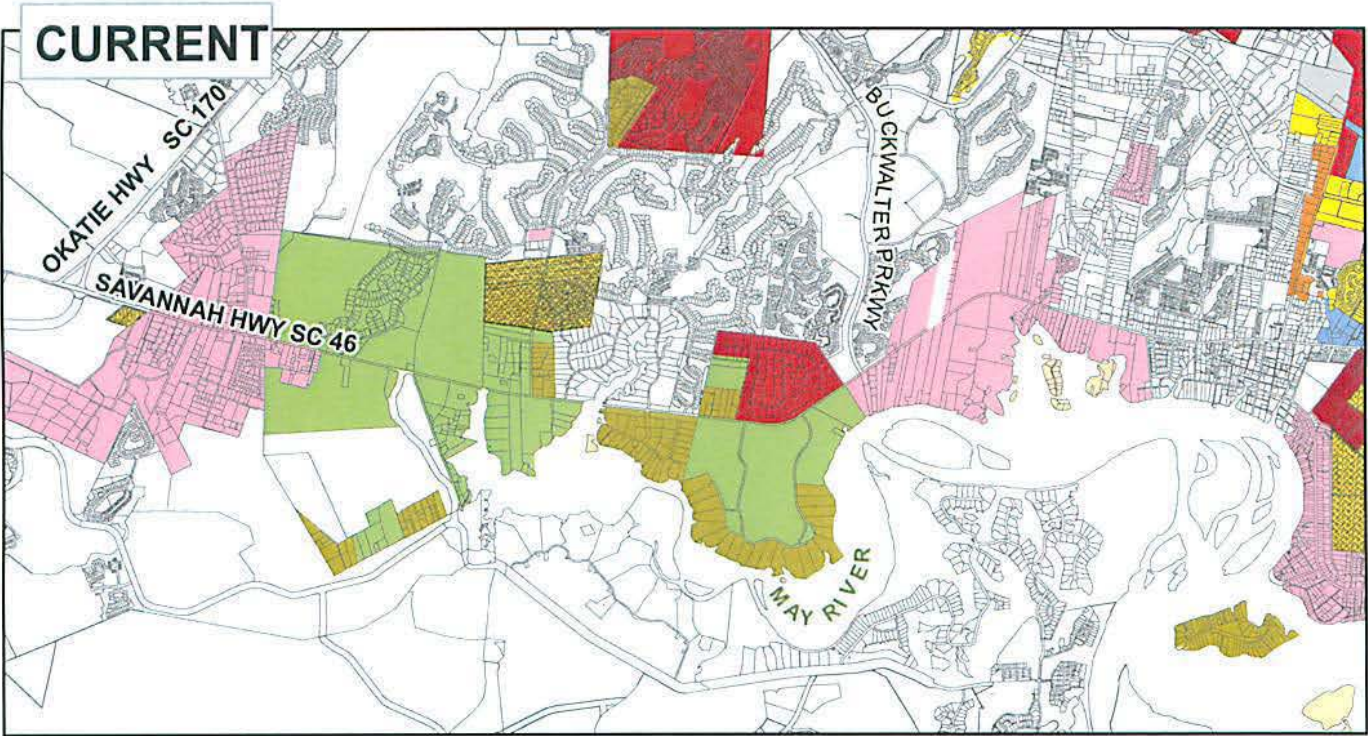

Ladson F. Howell, Staff Attorney

ATTEST:


Suzanne M. Rainey, Clerk to Council

First Reading: August 23, 2010
Second Reading: September 13, 2010
Public Hearing: September 27, 2010
Third and Final Reading: September 27, 2010

(Amending 99/12)



LEGEND

-  Parcels
-  Rural
-  Rural Residential
-  Rural Transitional
-  Community Preservation
-  Suburban
-  Planned Unit Development
-  MAY RIVER Community Preservation District, Proposed

**May River Community Preservation
Zone District Map Amendment**

From Rural, Rural Residential, Rural Transitional
To Community Preservation

