



**Beaufort County**  
**Public Works**  
**Stormwater Infrastructure**  
*Project Summary*

**Project Summary:** Port Royal Island Repaired Washouts - Quarter Horse Road

**Activity:** Routine/Preventive Maintenance

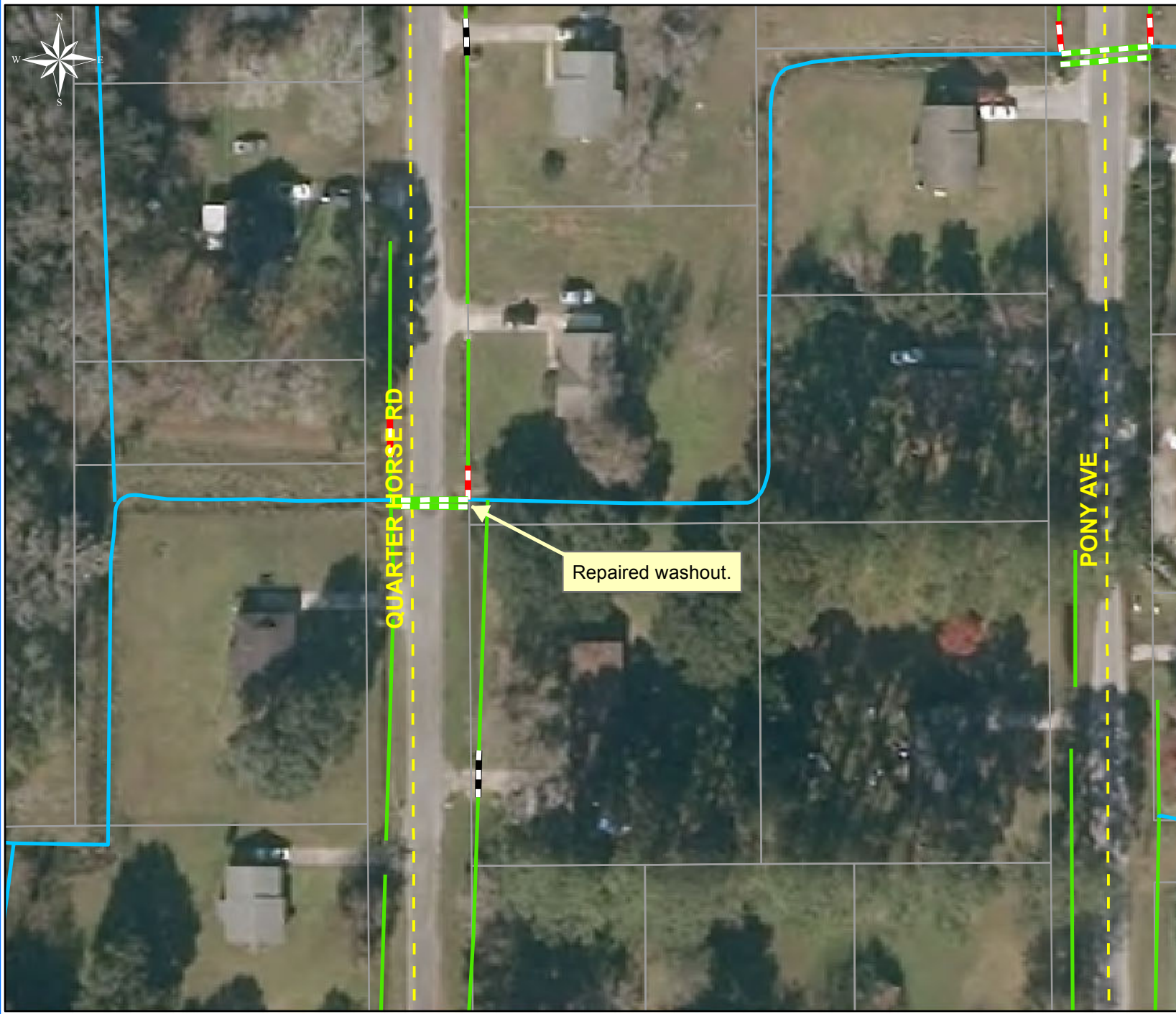
**Narrative Description of Project:**

Repaired washout.

**Duration:** 9/29/16

<b>2017-320 / Port Royal Island Repaired Washouts</b>	<b>Labor Hours</b>	<b>Labor Cost</b>	<b>Equipment Cost</b>	<b>Material Cost</b>	<b>Contractor Cost</b>	<b>Indirect Labor</b>	<b>Total Cost</b>
AUDIT / Audit Project	0.5	\$11.75	\$0.00	\$0.00	\$0.00	\$6.62	\$18.36
RPWO / Repaired Washout	20.0	\$458.90	\$114.64	\$501.69	\$0.00	\$298.05	\$1,373.28
<b>2017-320 / Port Royal Island Repaired Washouts Sub Total</b>	<b>20.5</b>	<b>\$470.65</b>	<b>\$114.64</b>	<b>\$501.69</b>	<b>\$0.00</b>	<b>\$304.66</b>	<b>\$1,391.64</b>
<b>Grand Total</b>	<b>20.5</b>	<b>\$470.65</b>	<b>\$114.64</b>	<b>\$501.69</b>	<b>\$0.00</b>	<b>\$304.66</b>	<b>\$1,391.64</b>

(Pictures Not Available)



Project: Port Royal Island Washout Repairs

Activity: Routine/ Preventive Maintenance

Project #: 2017-320

Township/SW Dist: Port Royal Island/6

Completed: September 2016

Legend	
Drainage Type	
	Access Pipe
	Bleeder Pipe
	Channel Pipe
	Channel
	Stream
	Crossline Pipe
	Driveway Pipe
	Lateral
	Lateral Pipe
	River
	Road Pipe
	Roadside
	Roadside Pipe



1 inch = 67 feet